



**vitrafix**

---

VITRABOND FIXING ACCESSORIES / MANUFACTURED BY FAIRVIEW

**TECHNICAL INFORMATION**





## CONTENTS

1. ABOUT THIS MANUAL	P. 02	6. VITRAFIX VF3 & VF4 SYSTEM	P. 07
2. PRODUCT DESCRIPTION/ ADVANTAGES/ QUALITY	P. 03	7. VITRAFIX VF5 SYSTEM	P. 09
3. VITRAFIX SYSTEMS	P. 04	8. VITRAFIX FIXINGS/ ACCESSORIES	P. 10
4. VITRAFIX VF1 SYSTEM	P. 05	9. INSTALLATION	P. 11
5. VITRAFIX VF2 SYSTEM	P. 06		



vitrafix

VITRABOND FIXING ACCESSORIES / MANUFACTURED BY FAIRVIEW

## ABOUT THIS MANUAL

This product manual has been produced to assist architects and installers to design and work with Fairview's aluminium carrier system and accessory range Vitrafix

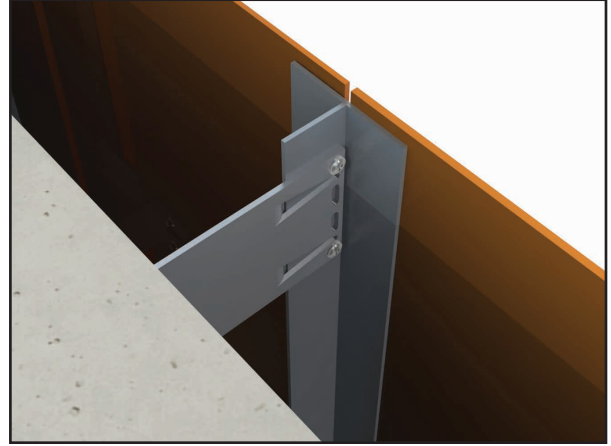
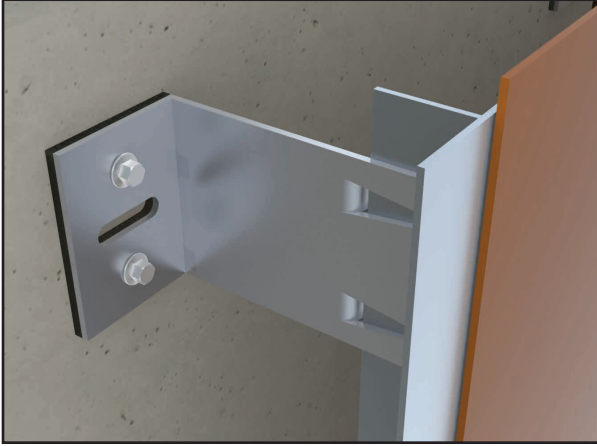
Due to the uncontrolled conditions and varied projects as well as the variable skills and judgement of users/installers, the suggestions and recommendations contained within this manual are provided without warranty. The information and recommendations contained within this brochure are believed to be correct at the time of publishing, September 2019

Fairview reserves the right to revise the contents of this manual



# PRODUCT DESCRIPTION

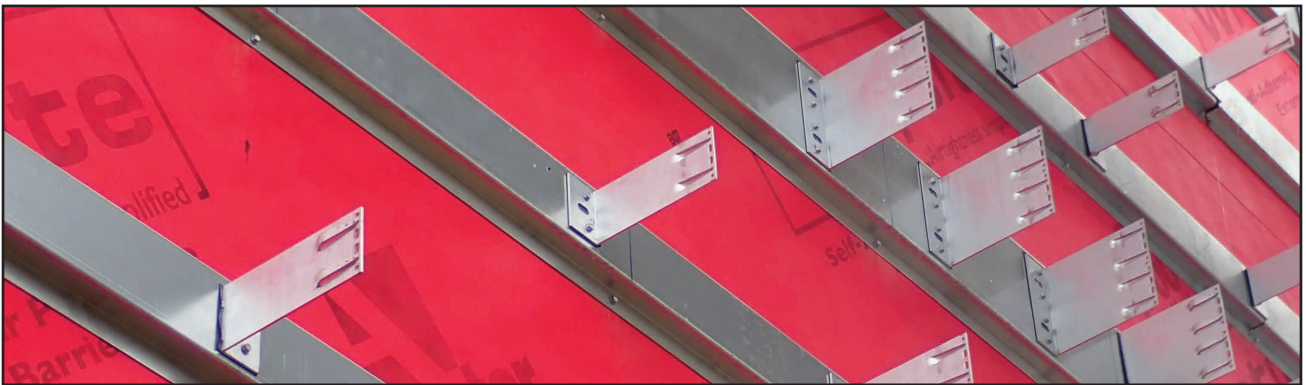
Vitrafix range consists of aluminium carrier system brackets and profiles as well as fixings which have been used and tested to BS8414 parts 1 and 2 as well as CWCT tested



# ADVANTAGES OF VITRAFIX

Vitrafix has been designed to offer a cost effective yet strong carrier system and is suitable for all building types, the key benefits of Vitrafix are listed below.

- High Stock Levels
- Fast Lead Times
- Lightweight
- Durable
- Tested to BS8414
- Tested to CWCT



# QUALITY

A dedication to the total fulfilment of our clients and customers expectations is reached by a complete quality control system, beginning at the point of specification and continuing through to delivery of the guaranteed products. All activities are carried out in a manner which.

- Uses the framework of ISO9001 Quality Standards to verify the quality of our systems
- Ensures that our products and services are of the highest standards
- Create continuous improvements to our product through the application of the best quality practises



vitrafix

VITRABOND FIXING ACCESSORIES / MANUFACTURED BY FAIRVIEW

## VITRAFIX SYSTEMS

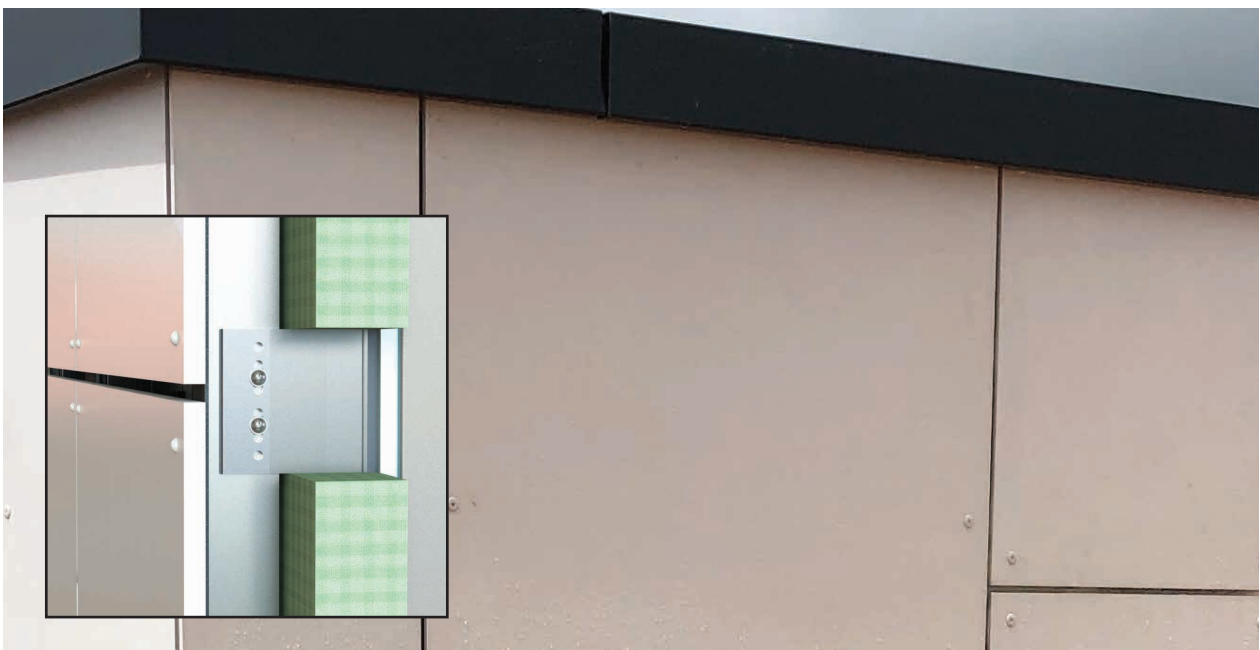
Vitrafix is available in 4 main ranges to suit satisfy all installation scenarios from face fixed rivet systems for aluminium panels such as Vitrabond and VitraDual right through to secret fixed systems using undercut anchors for panels such as Ceramapanel, these systems are described as follows.





## VITRAFIX VF1 SYSTEM

Vitrafix VF1 system gives ease of installation for panel systems using face fixings or discrete mechanical fixings, the system has adjustability of 102mm-250mm and can be further extended by combining the Vitrafix VF2 system to give an additional 26-40mm





## VITRAFIX VF2 SYSTEM

Vitrafix VF2 system is used for installing panel systems from flat sheet mechanical fix through to discreet cassette and secret fixed panels where a shallow cavity with no insulation is suitable. VF2 can also be used in conjunction with VF1, VF3 and VF4 systems to give additional depth to the cavity.





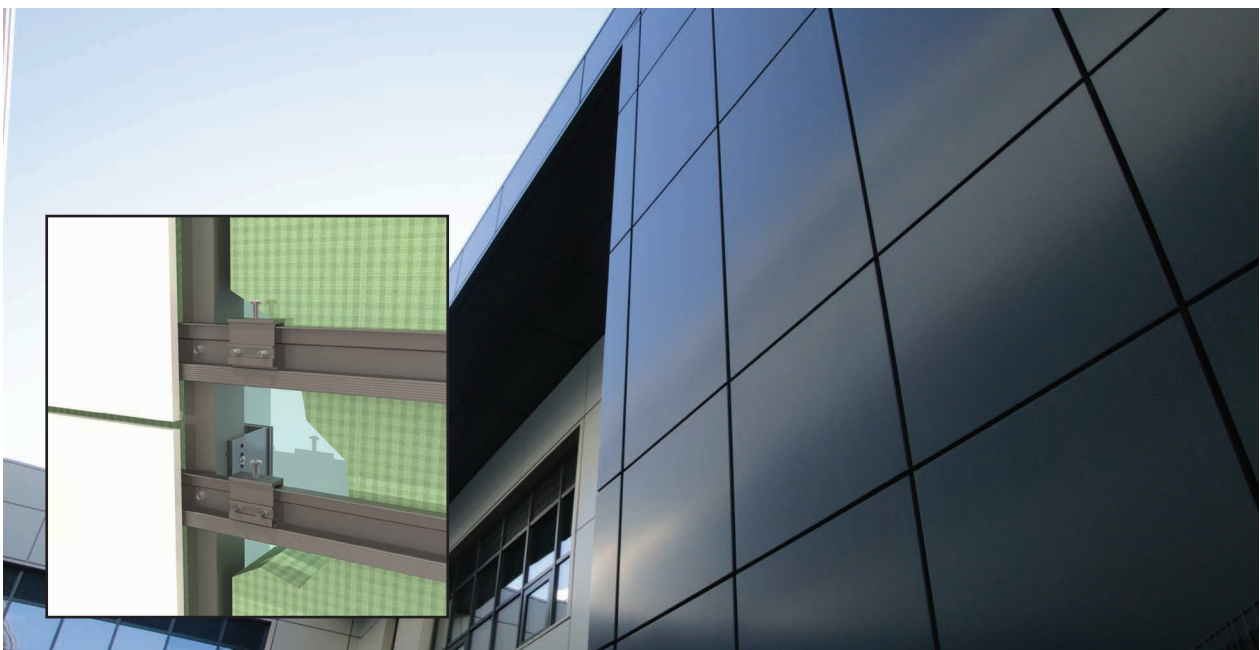


## VITRAFIX VF3 SYSTEM

Vitrafix VF3 system uses undercut anchors to give a secret/hidden installation of panels from 8mm thickness and upwards. This system gives adjustability from 142mm-290mm and can be further extended by combining the Vitrafix VF2 system to give an additional 26-40mm

## VITRAFIX VF4 SYSTEM

Vitrafix VF4 system is used on solid aluminium panels where a hidden fixing is required, suitable on both flat sheet and cassette panels alike. This system gives adjustability from 142mm-290mm and can be further extended by combining the Vitrafix VF2 system to give an additional 26-40mm.







## VITRAFIX VF5 SYSTEM

Vitrafix VF5 system is used where rails are required to span between floors each project is bespoke and designed accordingly. VF5 is compatible with both flat sheet face fixed panels and with secret or discrete fixed panel systems. For more information, contact the Valcan sales team







## VITRAFIX FIXINGS

Within the Vitrafix product range, Fairview offers a full range of fixings for installing panels in all methods from face fix panels to aluminium or timber carrier systems through to 'secret' undercut anchor installation. All visible fixings can be colour matched to Valcan panels from Vitrabond, VitraDual and Ceramapanel product ranges.

## VITRAFIX ACCESSORIES

Fairview offer a range of accessories including EPDM tapes for rails through to electric rivet tools to reduce strain on installation. Fairview also supply full range of touch-up paints colour matched to Vitrabond and VitraDual panel finishes, contact the sales team for more information on this service.



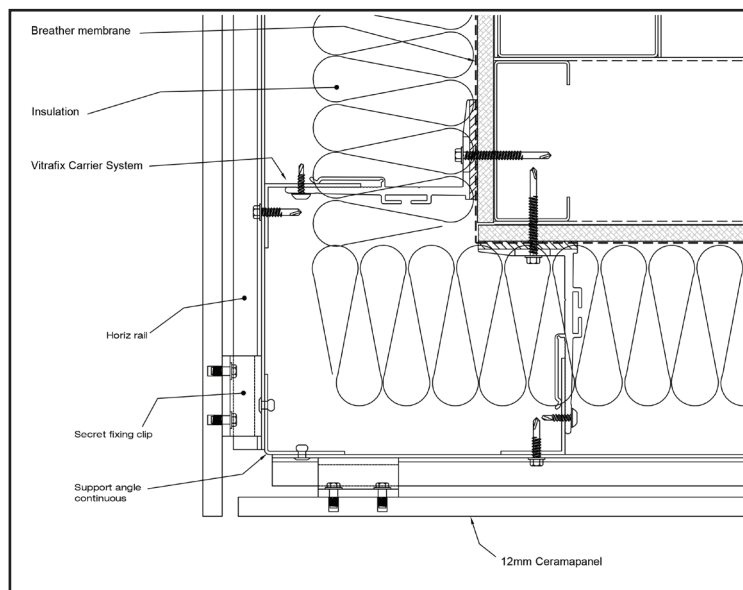
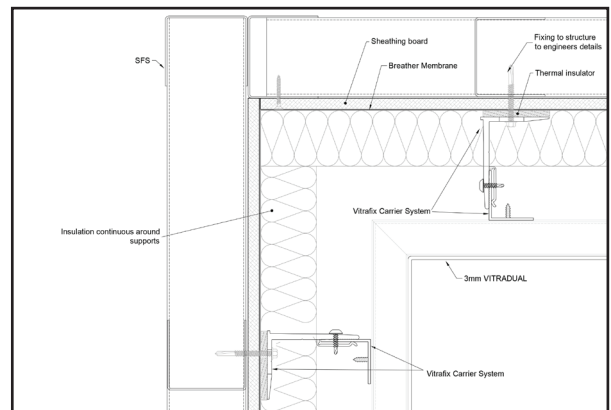
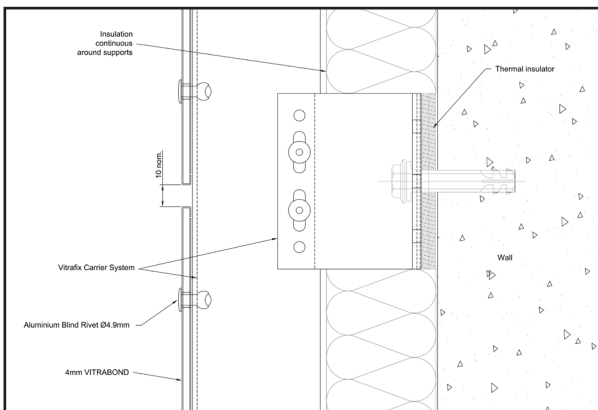


vitrifix

VITRABOND FIXING ACCESSORIES / MANUFACTURED BY FAIRVIEW

# INSTALLATION

Valcan offer a full range of fixing details for each panel installation system, for more information contact Valcan on enquiries@valcan.co.uk or +44 (0) 1278 428 245







**V A L C A N**

PART OF THE FAIRVIEW GROUP

UNITED KINGDOM / NEW ZEALAND / AUSTRALIA  
SALES ENQUIRIES 01278 428245 ENQUIRIES@VALCAN.CO.UK



[WWW.VALCAN.CO.UK](http://WWW.VALCAN.CO.UK)